

Cruise Control Witto's Nudge Buttons Resistor board Options available

Email to wit.cieslik@honeywell.com

!! Warning !!

You **MUST** have the TuneBoy Cruise Tune
Which **impiments** Cruise Control **AND**
disables the O2 sensors from Engine
Management.

Any other 'Tune' will not work as the
ECU will still be trying to use O2
sensors from the engine

Stock at: 21 Feb 2013

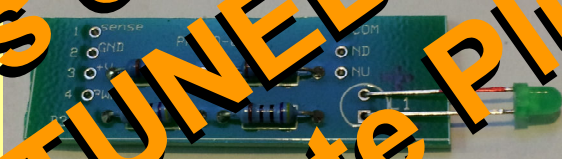
Out of Stock

[Option 1] plain nudge board \$7.00 AU + P&H



TWO Available only

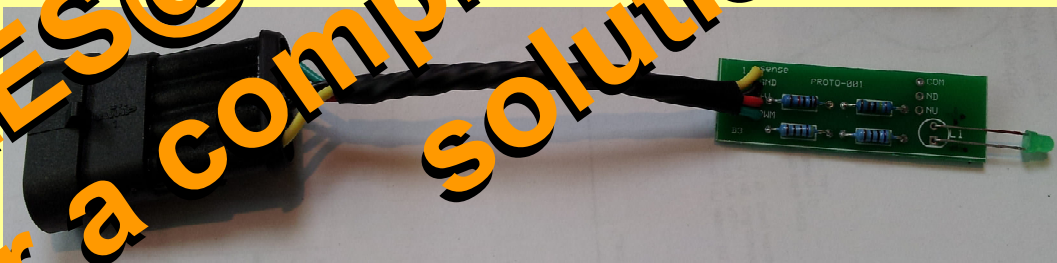
[Option 2] populated board \$10.00 AU + P&H



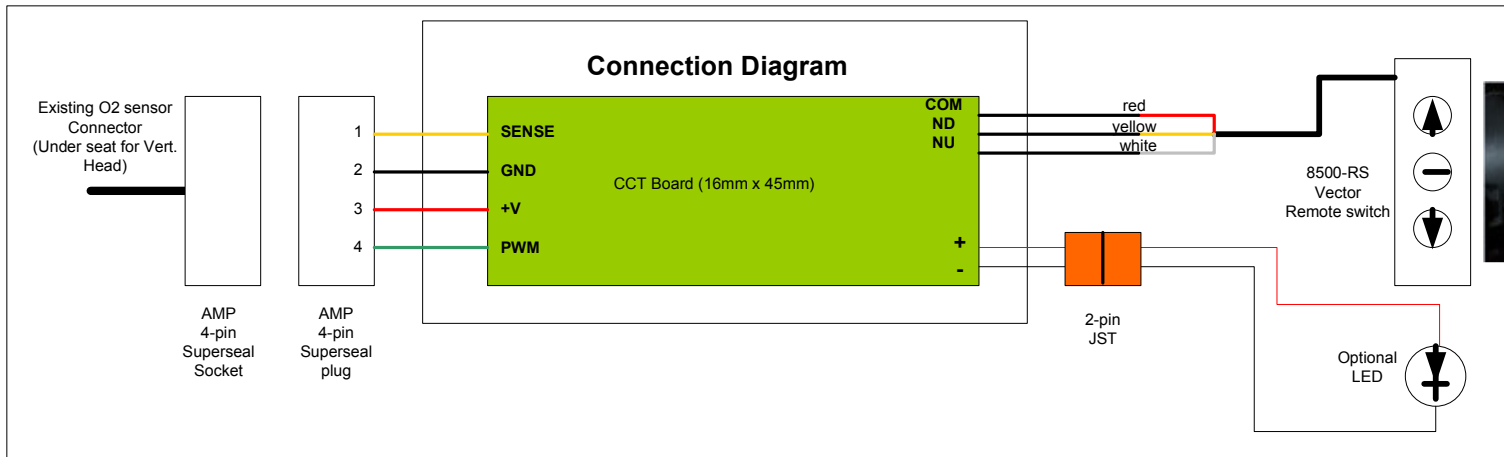
← LED is not Soldered
so you can mount it
where you like

THREE remaining

[Option 3] a populated board with a connector at the end \$20.00 AU + P&H



<http://www.madcogz.com/MSTD1200s/other/Mstd-CC-buttonoptions.pdf>
<http://www.madcogz.com/ms-data.htm>



!! Warning !!

You MUST have the TuneBoy Cruise Tune Which impiments Cruise Control AND disables the O2 sensors from Engine Management.

Any other 'Tune' will not work as the ECU will still be trying to use O2 values from the engine



Installation Instructions

The basic installation plan is :

Cut the plug off the end of the switch cable
Connect 3 of the 4 wires from the switch cable, to the cable from the resistor board. Yellow, Red and White. (ignore the Green wire from the switch)

Mount the switch

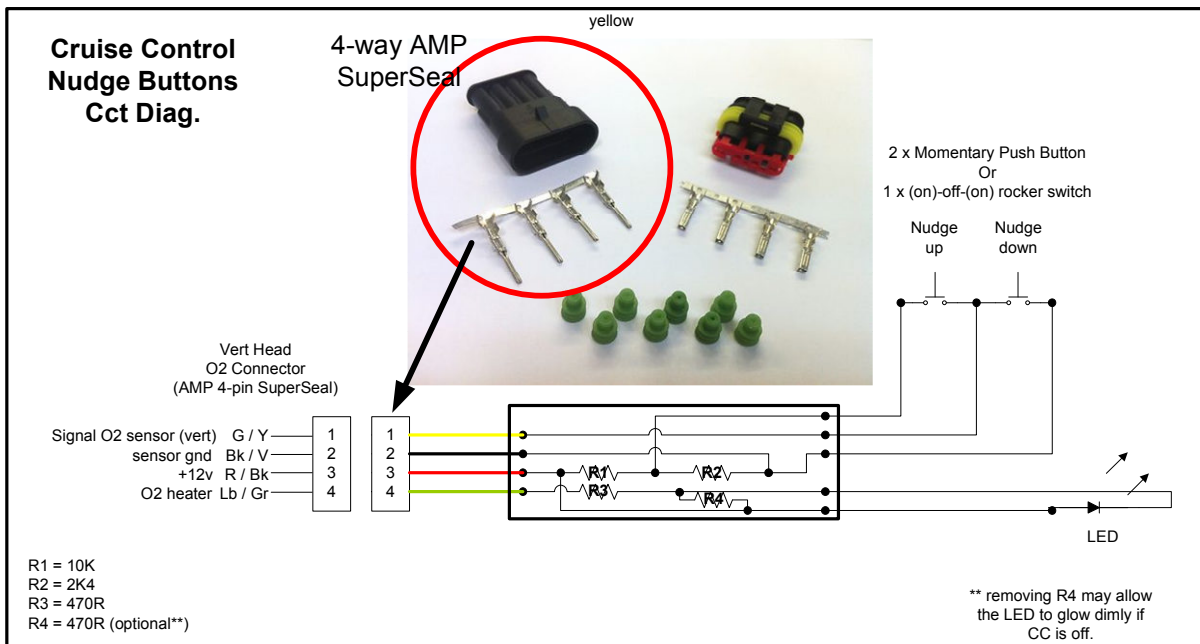
The switch is intended to mount on the LH side between the LH controls and the LH mirror base.

You'll quickly find that there is NOT quite enough space between the controls and the mirror.

- [1] loosen off the mirror mount
- [2] remove the controls
- [3] cut the plastic 'nipple' off, from the back of the controls
- [4] re-assemble the controls on the bars (loosely)
- [5] Now ... Mount the new switch in place , and gently tighten everything back up !

Feed the resistor board and cable back along the bike under the tank (LHS) and into the area under the seat

The AMP plug on the Resistor board plugs into the Vert O2 sensor lead.



LED Installation Instructions

The basic installation plan is :

You should install the LED somewhere convenient on your dash.
3mm led on the dash plastics works well.

Mounting inside the Trailtech switch is NOT for the faint hearted

This actually is pretty hard.

Not so much the install, but breaking the switch open is a right bastard !!!

There is a good chance of breaking the housing or just ruining the edges and turning it into something that looks like the dog chewed up.

If you insist ...

To **Break the switch open** you will need some good sharp small flat bladed screwdrivers.
I also ran round and rouns and round and round the gap with a sharp bladed knife.

With plenty of time and patience, keep working your way around the switch, gently but firmly trying to prise the top part of the switch up and away from the bottom part.

(You are trying to get your blade 'under the top part.

Beware, the plastic is soft and will not stand too much abuse.

Work carefully and methodically, don't go for gold.

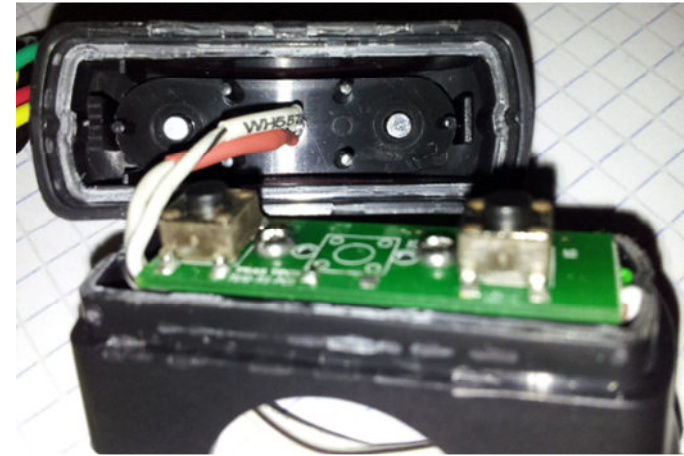
Use a very small tipped screwdriver and try to get it 'under' the lip of the top part of the switch.
If you're doing it right, you'll hear the plastic/glue giving way... good job keep at it!

Whew! It's Apart !

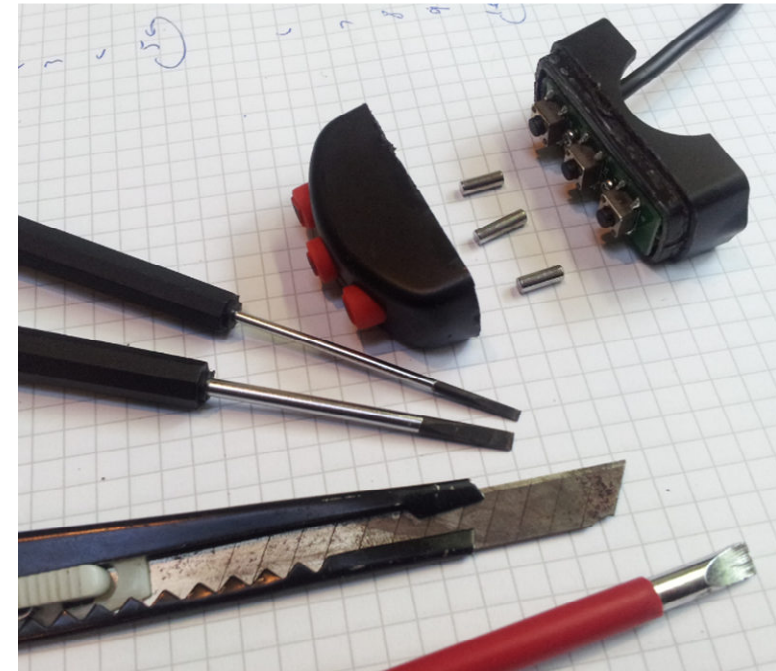
Ok ... Inside you will see a small cct board with three push buttons. Also three push rods will fall out from the top part. (NOTE: Keep the two short rods).

- Remove the screws from the cct board and pull the board our
- Remove the middle switch from the board. (cut or desolder)
- You may also need to enlarge the hole in the bottom switch housing for the two extra wires (or drill a 2nd hole).
- Insert your LED wires from the back and feed to the front.
- Reassemble the cct back into the housing.
- Solder the LED onto your wires and jam or glue it into the CENTER hole in the top housing.
- Re-insert the two SHORT rods, and glue your housing back together.

Feed the LED wires back along the bike under the tank (LHS) and connect to the LED socket on the resistor board.



Housing opened – center switch removed – LED wired and jammed in place



The tools I used - also note the three push rods