

CCT board is green on track side but brown on component side ...

Looks like V125 BASS
(Cct board has no FETs in input stage)

but some differences:
Both inputs are wired together and present a single input to the V1 (pin 7).

Amp has a dual ganged distortion control (not sensitivity like in either V125 LEAD or V125 BASS).

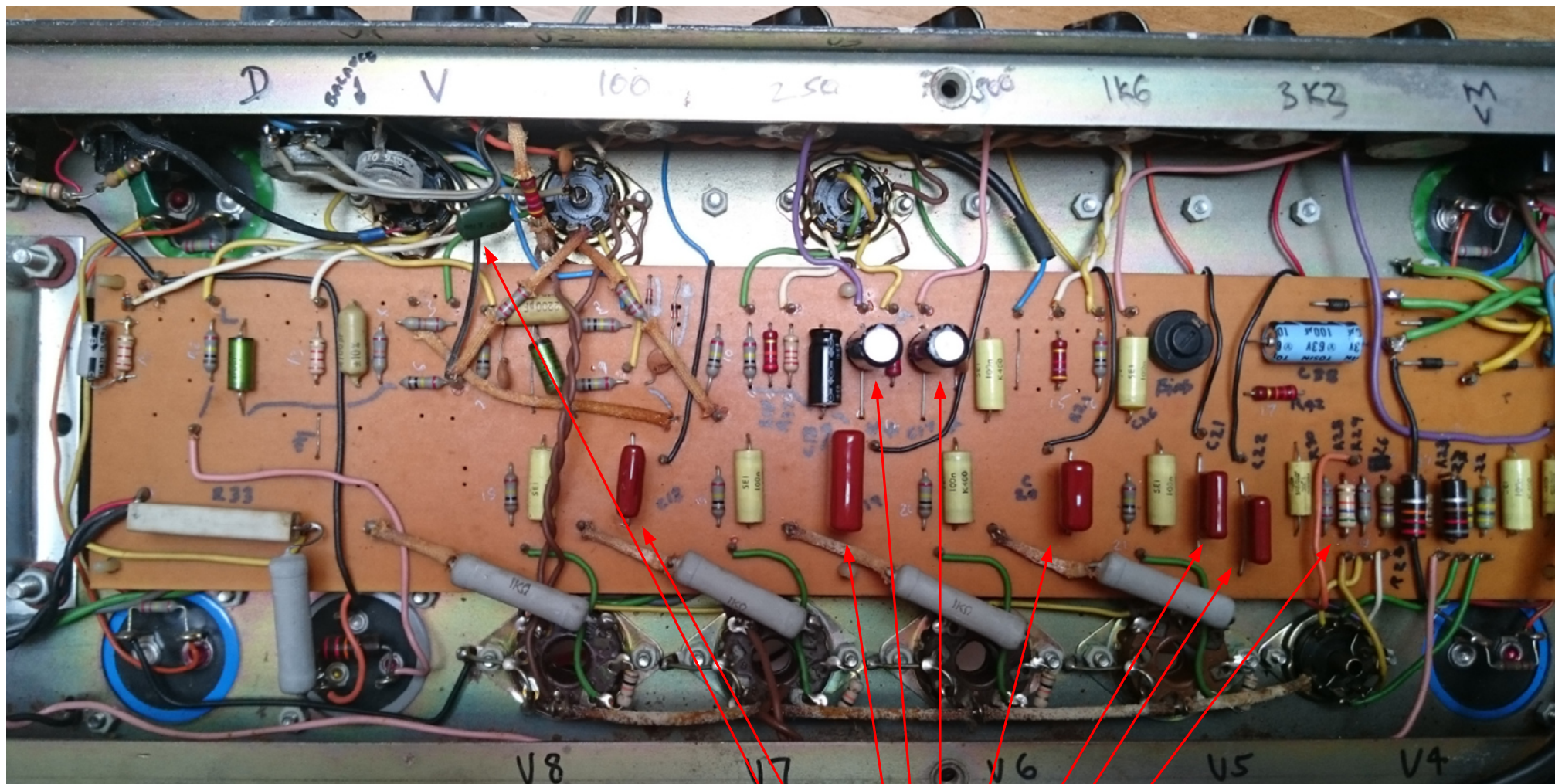
Output to speakers is switch selectable (not like V125LEAD)

Has 2 x signal diodes (after V2 ?) not in V125 LEAD cct...

Manufactured by Faraday group of companies
V125 I b ISS 3
SCN 2 V125-3



Climax



REPLACED
And all tubes even though 2 x EL34 were
OK and the ECC8x's seemed OK

Manufactured by Faraday group of companies
V125 lb ISS 3
SCN 2 V125-3

History:
Purchased 2nd hand about 1987

INPUT and OUTPUT wiring

Initial issues :
Fine for a few years then developed a trait of after an hours usage, the volume would start to waver and drop, and then all hell would break loose.

Relegated to the storeroom...
UNTIL NOW !

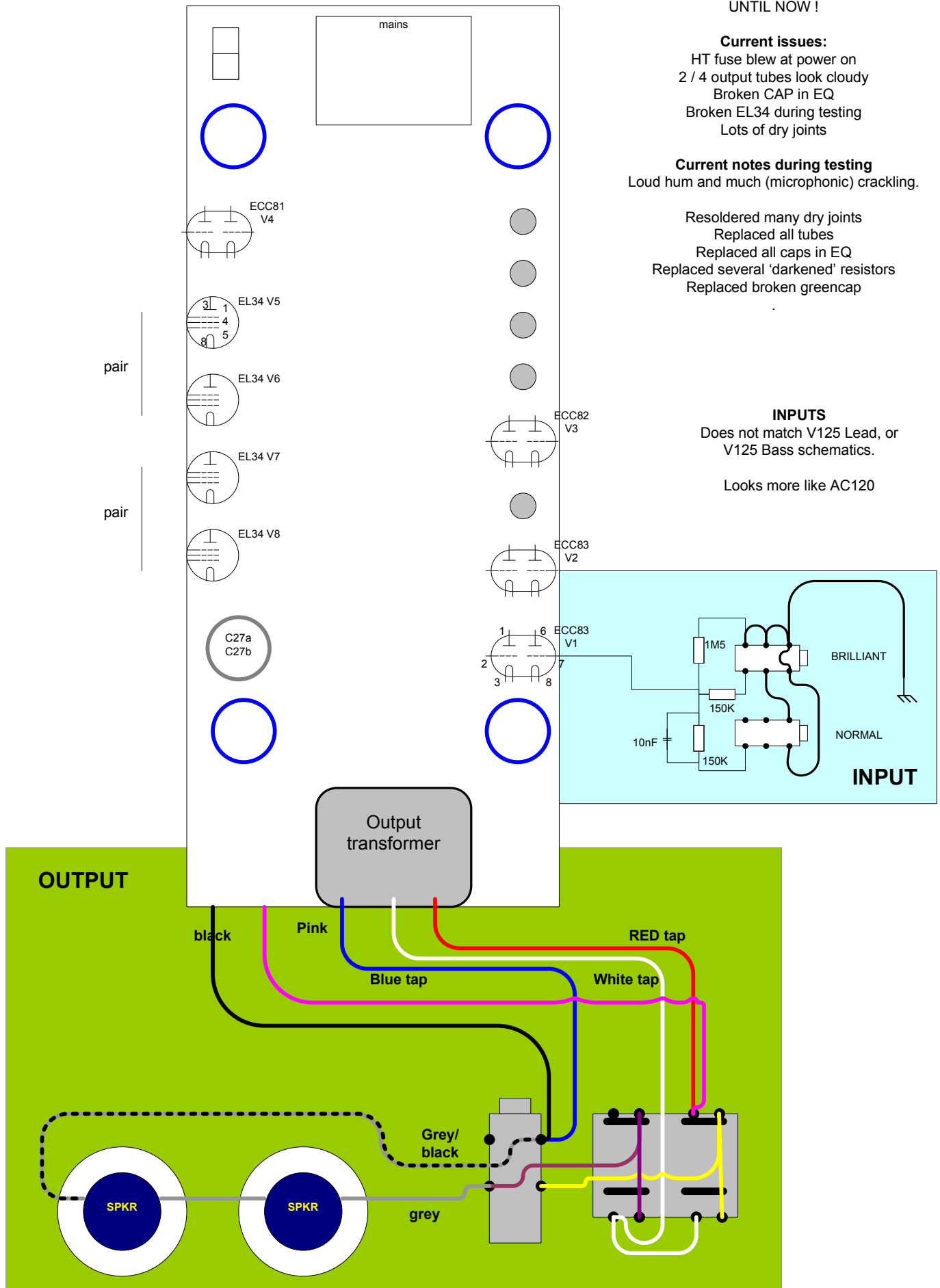
Current issues:
HT fuse blew at power on
2 / 4 output tubes look cloudy
Broken CAP in EQ
Broken EL34 during testing
Lots of dry joints

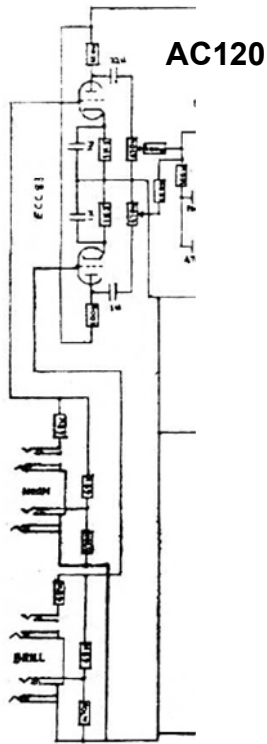
Current notes during testing
Loud hum and much (microphonic) crackling.

Resoldered many dry joints
Replaced all tubes
Replaced all caps in EQ
Replaced several 'darkened' resistors
Replaced broken greencap

INPUTS
Does not match V125 Lead, or
V125 Bass schematics.

Looks more like AC120



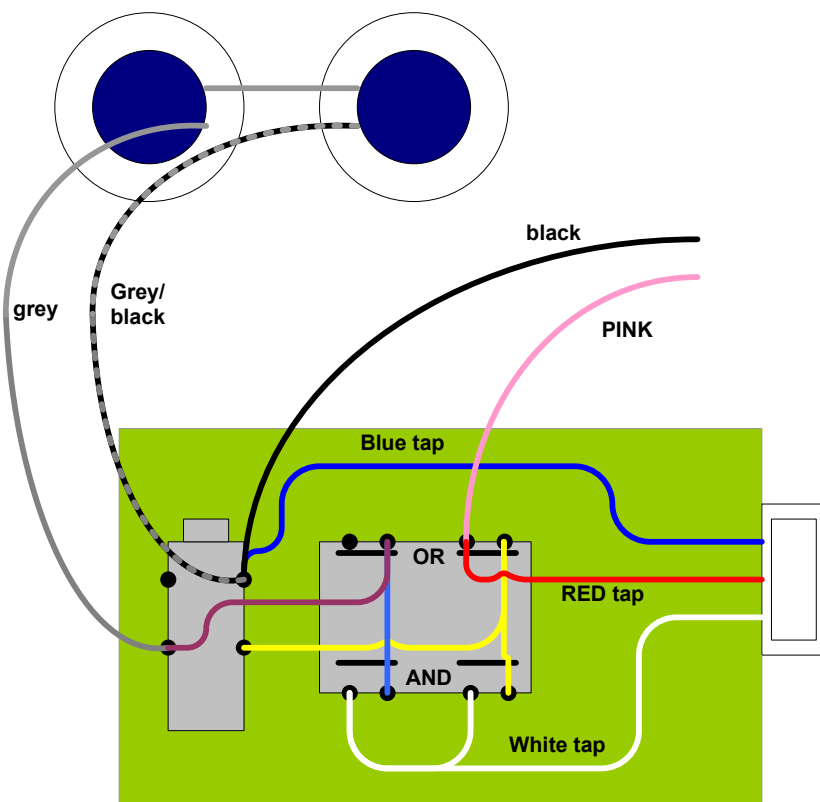
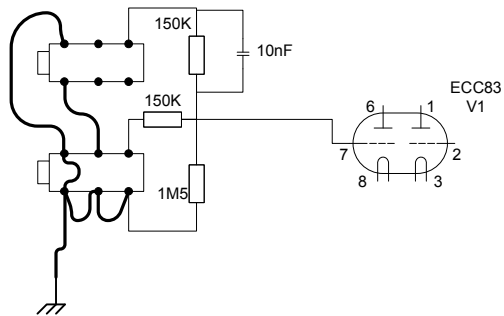


**Look
Familiar ??**

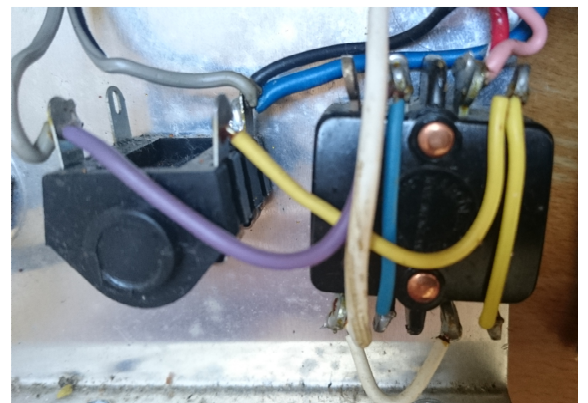
TBC:
but looks more like an
AC120 input channel

Does not match V125
Lead or V125 Bass
schematics.

**My V125
inputs**

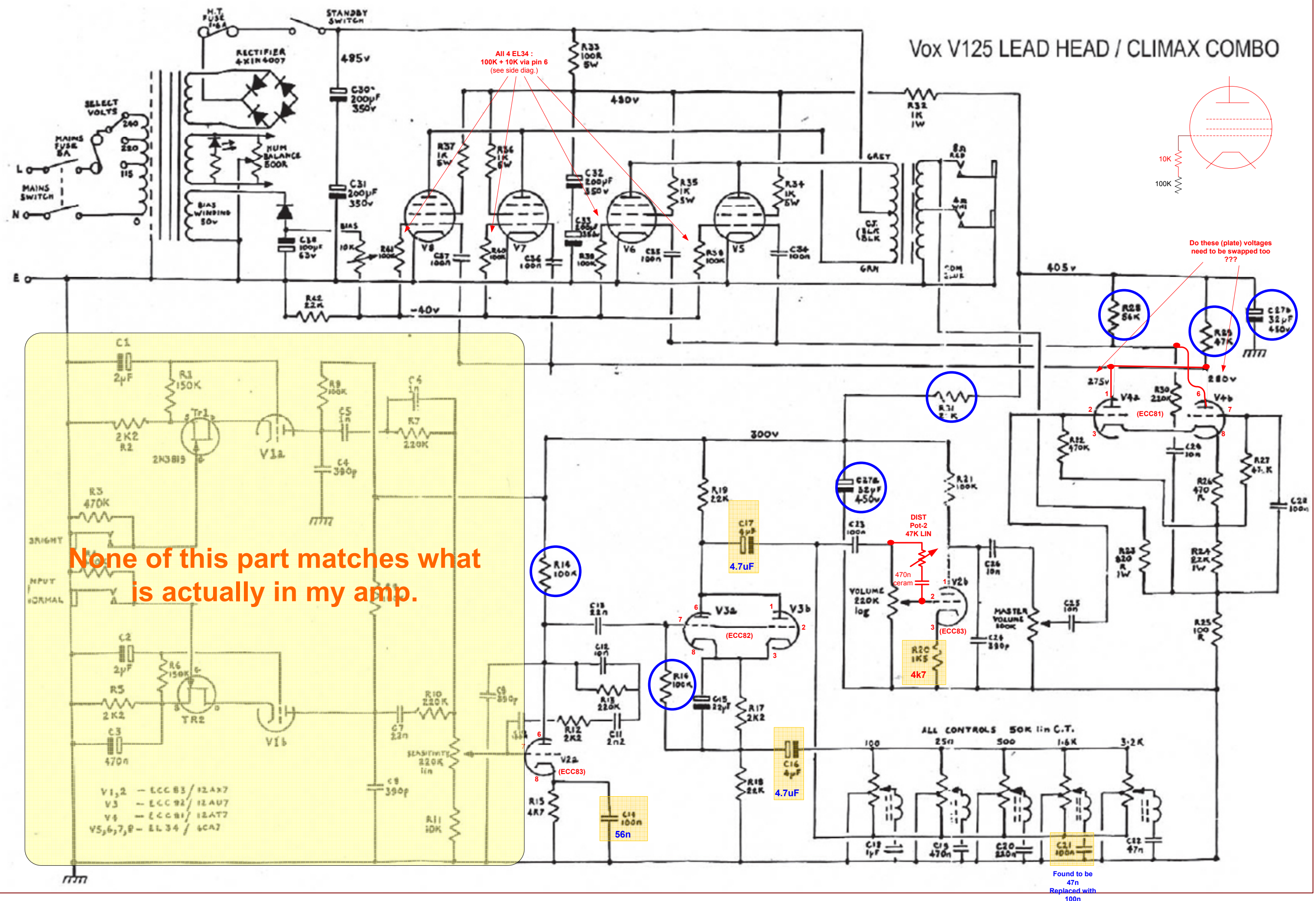


Speaker switch wiring
This is how mine is wired...
I don't know for sure if this is
correct.. it's just how it is



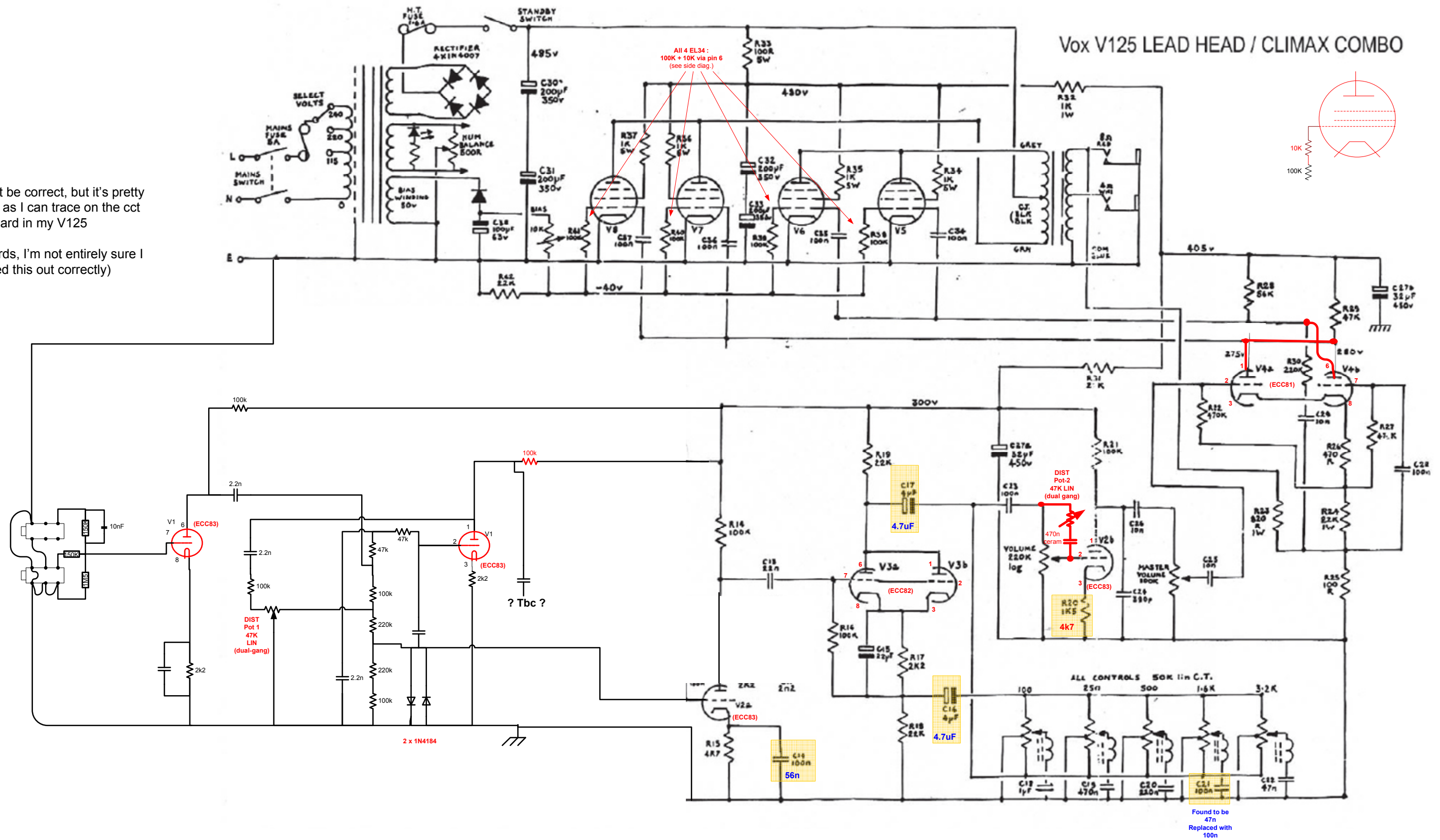
Credit: Phydauex for sharing the TAP colors and impedances : <http://music-electronics-forum.com/t24513/>

(red/pink=8 ohm tap, white=4 ohm tap, blue= ohm tap/earth, grey wires=internal speaker)

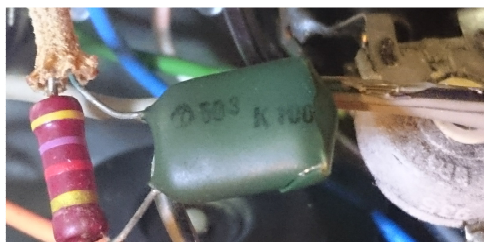
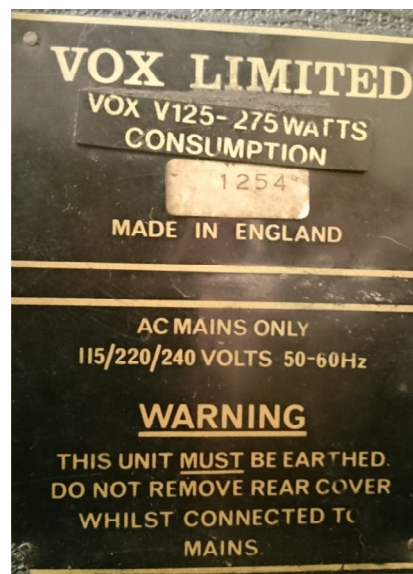
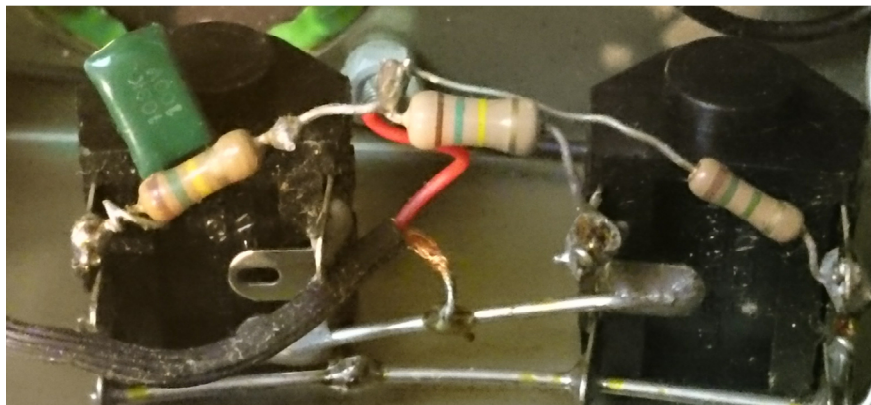


This may not be correct, but it's pretty close as far as I can trace on the cct board in my V125

(In other words, I'm not entirely sure I mapped this out correctly)



Rear of input jacks (red wire goes to ECC83 (V1 ?))



CAP is clearly broken ... and what is going on with that furry trim-pot ???



VOX V62.5 ???



Pair 1 Circuitry OK
(not blowing HT fuse or valves)



Pair 2 Circuitry OK
(not blowing HT fuse or valves)



Climax

